

EXHIBIT B

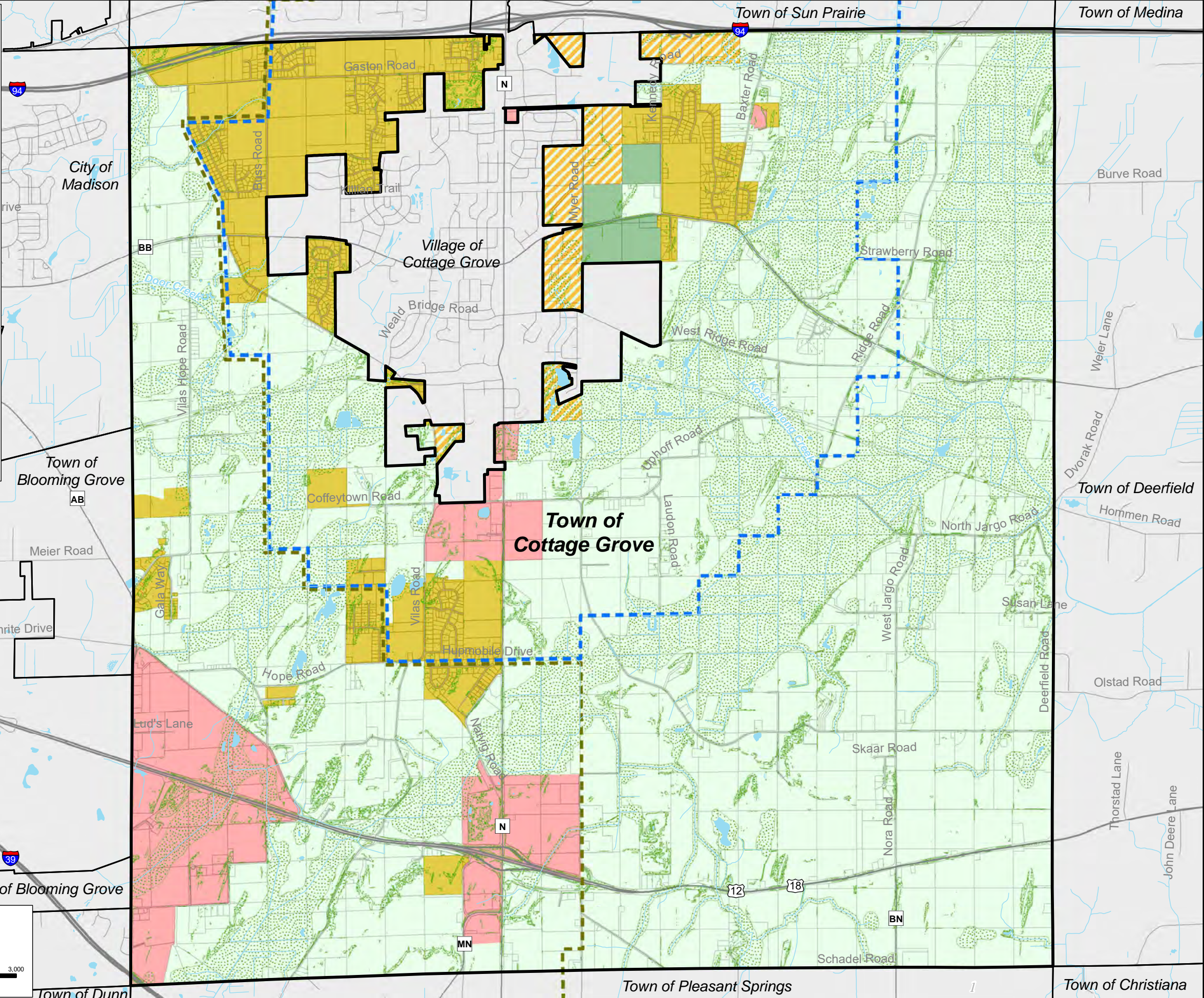
Legend

- Parcels (January 2018)
- Future Land Use Categories**
 - Agricultural Preservation Area
 - Agricultural Transition Area
 - Open Space and Recreation Area
 - Neighborhood Development Area
 - Commercial Development Area
 - Resource Protection Corridor
- City of Madison Extraterritorial Jurisdiction Boundary (Jan. 2018)
- Village of Cottage Grove Extraterritorial Jurisdiction Boundary (Jan. 2018)
- Town of Cottage Grove Limits (January 2018)
- Surface Water

Note: Lands in the Agricultural Preservation Area, including lands also mapped Resource Protection Corridor, may serve as TDR Sending Areas in the Town's TDR program. Lands in the Neighborhood Development Area, and in the Agricultural Transition Area once the Town designates such lands as appropriate for more intensive development, may serve as TDR Receiving Areas. See Land Use chapter for further details.

Sources: MDRoffers Consulting, Strand Associates, FEMA, WI DNR & Dane County LIO

Date: May 11, 2018



FUTURE LAND USE

TOWN OF COTTAGE GROVE COMPREHENSIVE PLAN
DANE COUNTY, WISCONSIN

MAP 10